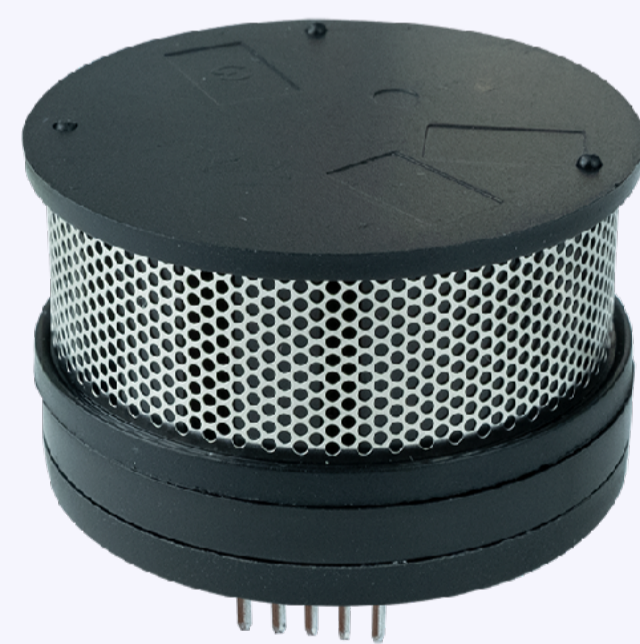


# Smoke Detection Digital Sensor

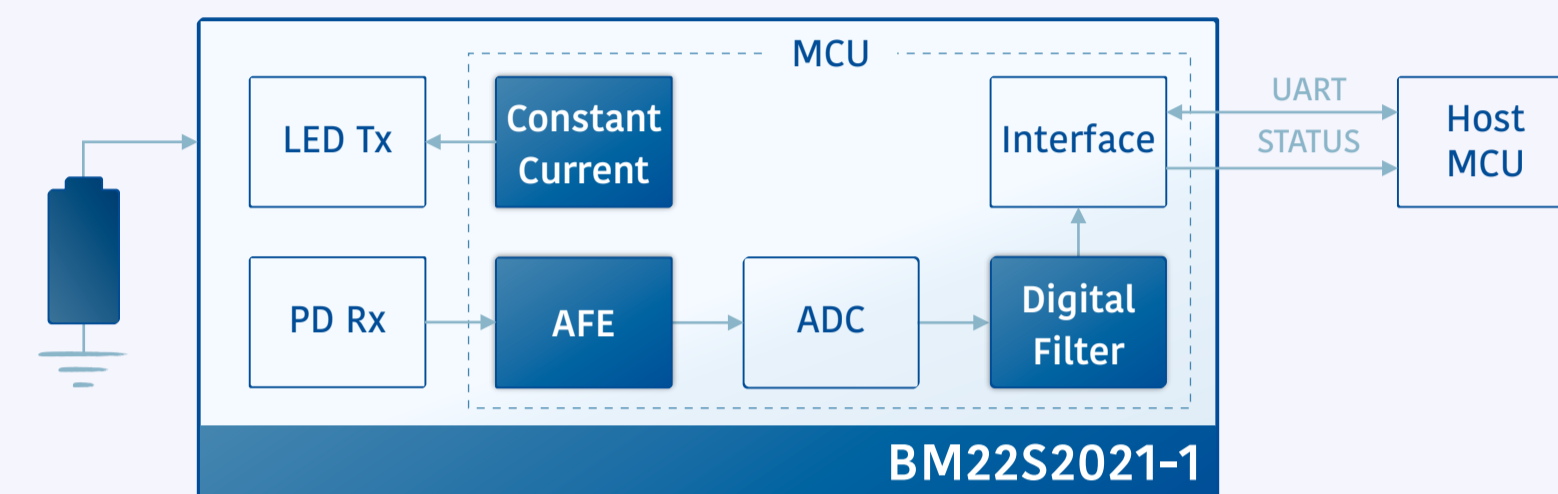
## BM22S2021-1

### Characteristics

- 3V~5V wide operating voltage, low standby power consumption
- Self-detect function
- Integrated digital filter to enhance immunity to interference
- Sets and reads sensor data through UART
- Status output to trigger alarm devices
- Integrated temperature compensation algorithm, good sensor consistency



### Block Diagram



### Applications

Smoke alarms, etc.

