

BLDC Cooling Fan Workshop

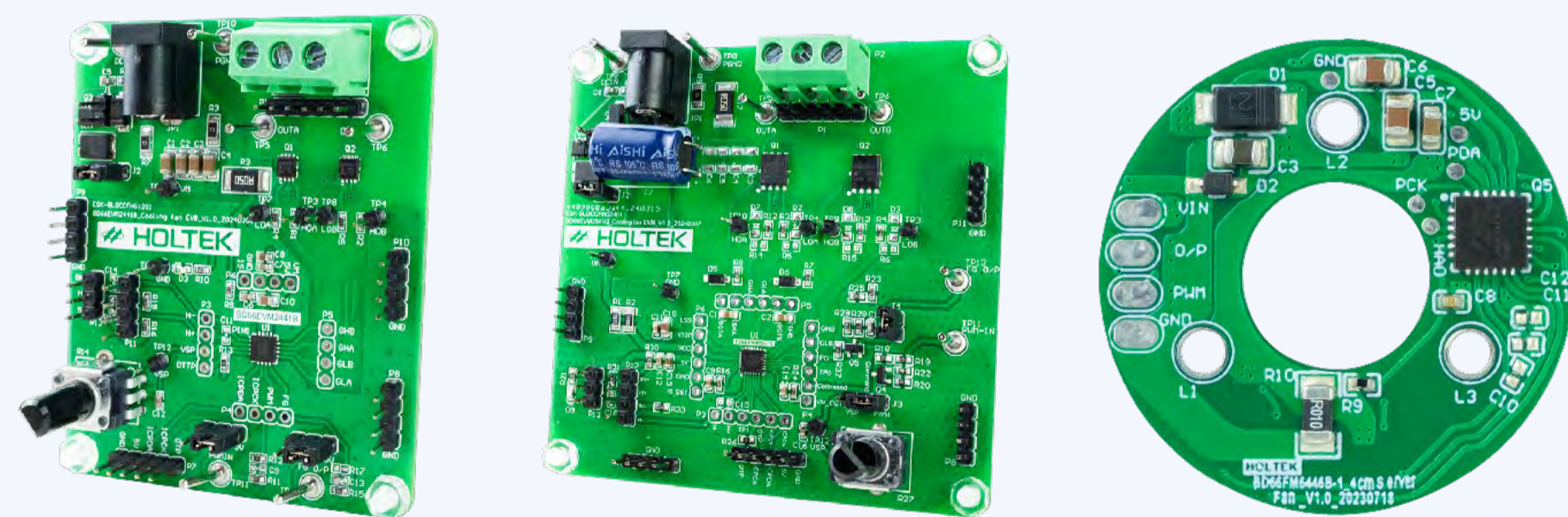
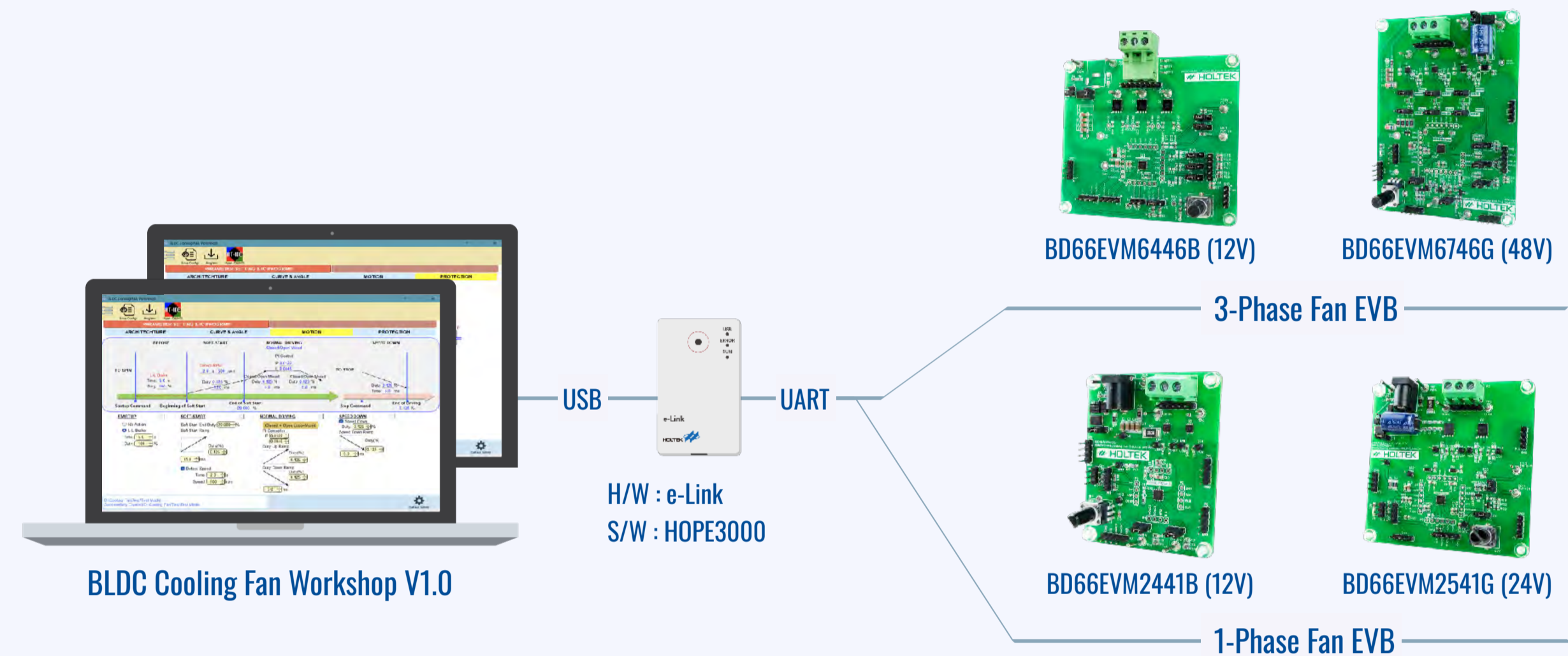
1-Phase: BD66RM2441B/2541G

3-Phase: BD66FM6446B/6546G/6746G/6752G

Characteristics

- Supports 1-/3-phase cooling fan control solutions
- Graphical interface for parameter display, easy for development and debugging
- Supports secondary development, providing maximum design flexibility
- Holtek provides suitable MCUs and development boards for different system voltages to reduce development period

Block Diagram



Applications

Cooling fans, server fans, etc.

