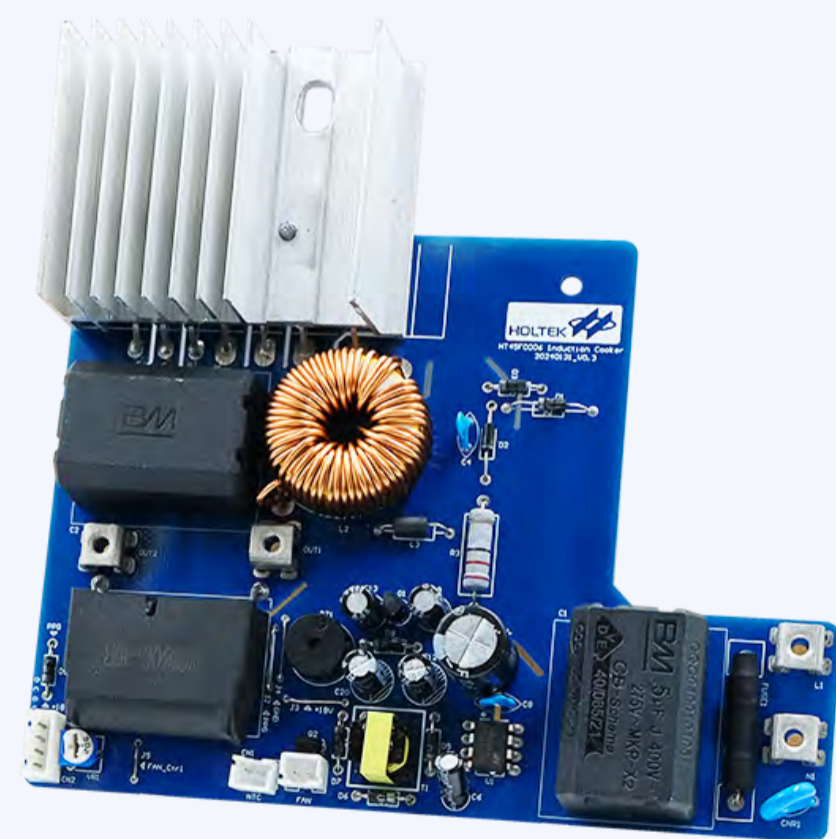


# Single IGBT Induction Cooker

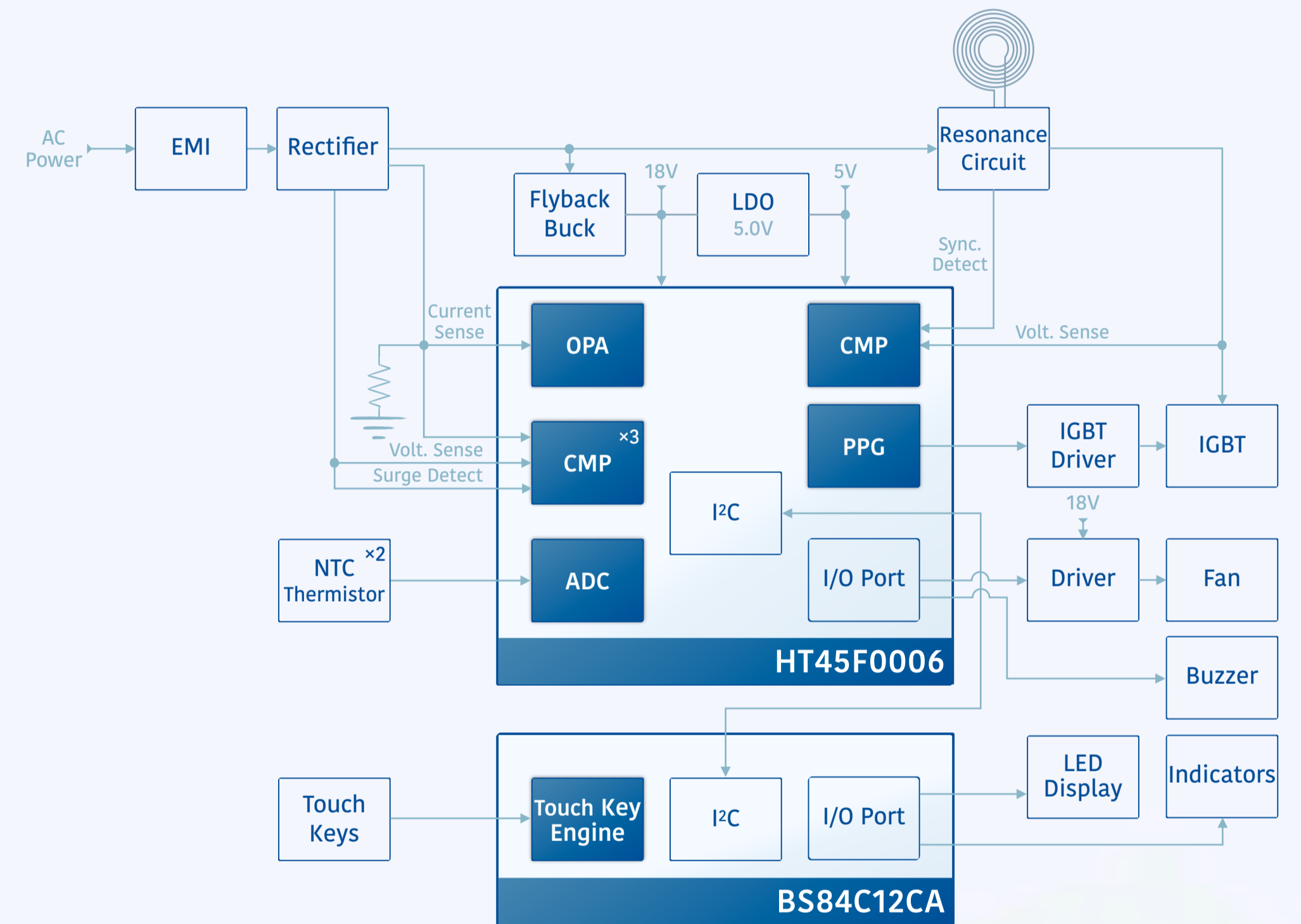
## HT45F0006+BS84C12CA

### Characteristics

- Continuous heating power range: 1000W~2000W @220V
- Integrated OPA and CMP circuits, reduced peripheral components
- Hardware ADC auto conversion to sample voltage/ current
- Voltage, current, voltage surge, current surge, IGBT reverse voltage protection
- Hardware frequency jitter optimizes EMI characteristics



### Block Diagram



### Applications

Household induction cookers, IH rice cookers, etc.

