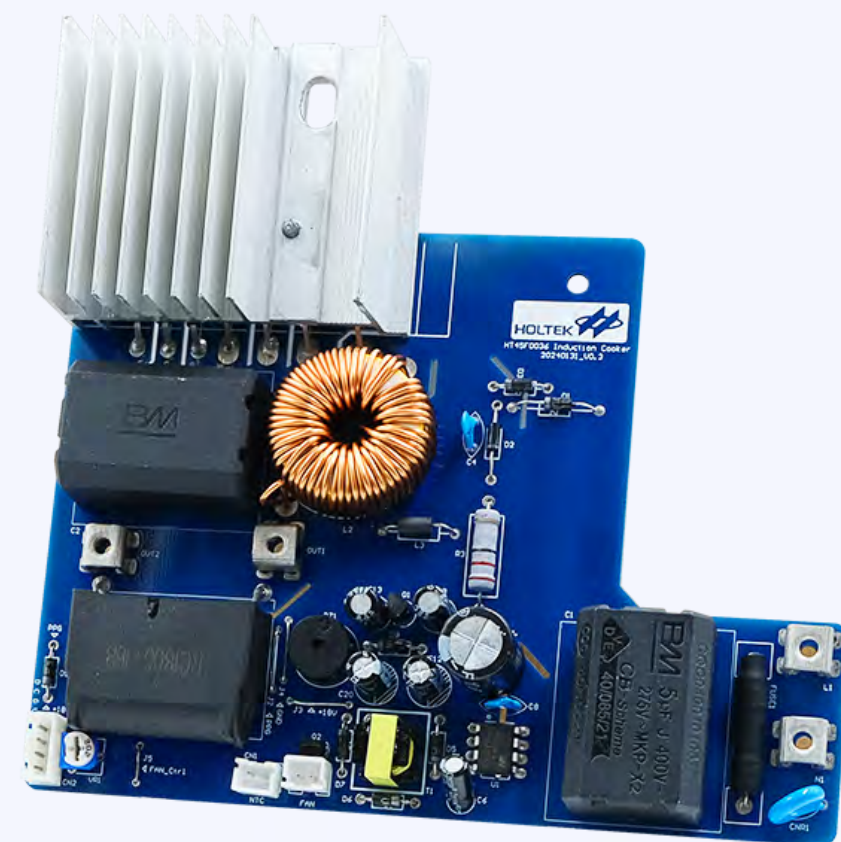


Low-Power Continuous Heating Single IGBT Induction Cooker

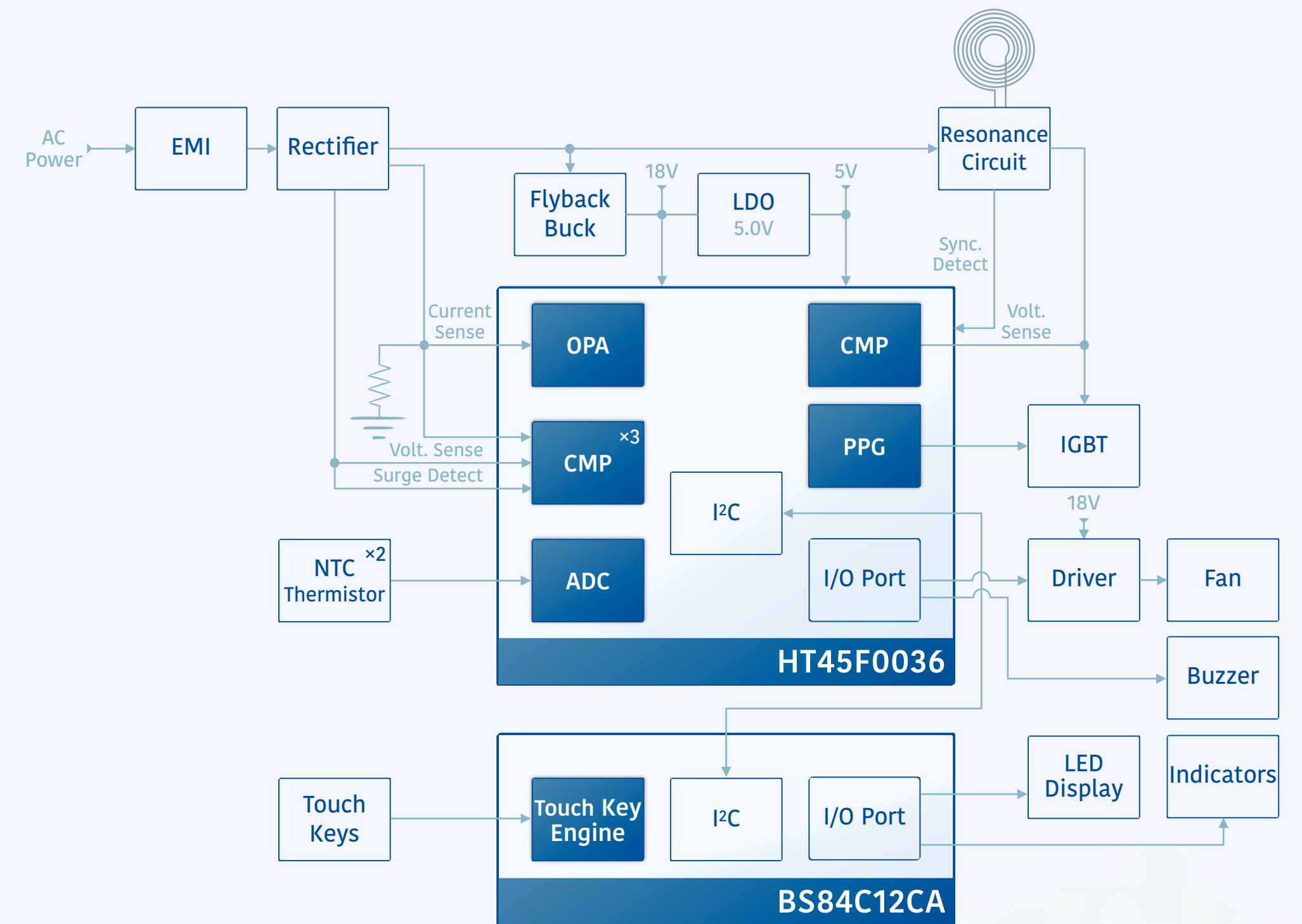
HT45F0036+BS84C12CA

Characteristics

- Heating power range: 200W~2000W @220V
- Integrated IGBT driver circuit supports low-power continuous heating
- Integrated OPA and CMP circuits, reduced peripheral components
- Hardware ADC auto conversion to sample voltage/current
- Voltage, current, voltage surge, current surge, IGBT reverse voltage protection
- Hardware frequency jitter optimizes EMI characteristics



Block Diagram



Applications

Household induction cookers, IH rice cookers, etc.

