

HT32 ICP Tool

User Manual

The information described in this document is the exclusive intellectual property of Holtek Semiconductor and shall not be reproduced without permission from Holtek.

Holtek is providing this document only for reference purposes of HT32 MCU based system design.

Holtek assumes no responsibility for errors or omissions.

All data and specifications are subject to change without notice.

For additional information or questions, please contact: Holtek Semiconductor.

Table of Contents

1.	Overview	3
1.1.	Introduction	3
1.2.	Features	3
2.	Operation Modes of ICP Tool.....	3
3.	How to Use ICP Programming Tool	4
4.	e-Link32 Firmware Update.....	7
5.	Revision History	8

1. Overview

1.1. Introduction

“ICP” is the acronym of In-Circuit Programming, which makes it possible that the user can update the MCU’s program memory under the software control without removing the mounted MCU chip from target PCB.

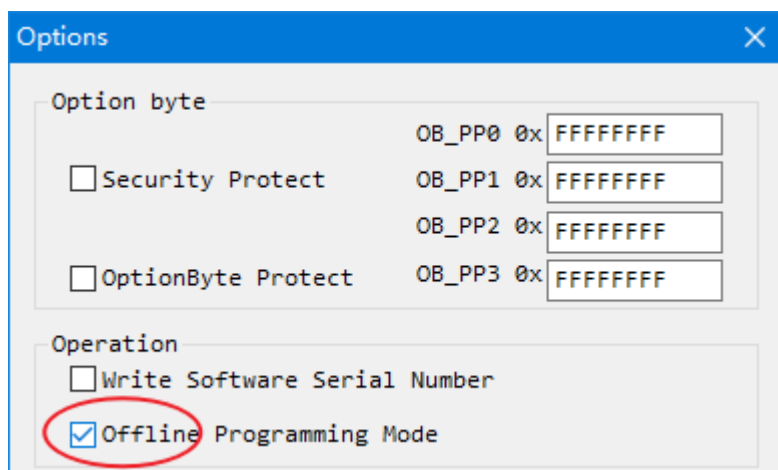
The HT32 ICP Programming Tool supports “online” and “offline” programming mode.

1.2. Features

- In-Circuit programming target chip
- Online/offline programming mode
- Write software serials number (SN) to target chip
- Limit the maximum programming count
- Data encryption for online/offline programming

2. Operation Modes of ICP Tool

The ICP tool supports “online” and “offline” programming mode.



2.1. Online Programming Mode

If the “Offline programming mode” option is unchecked, ICP Tool will program in online programming mode.

Click the “Start” button to start to program target device immediately.

The target device must be connected to e-Link32.

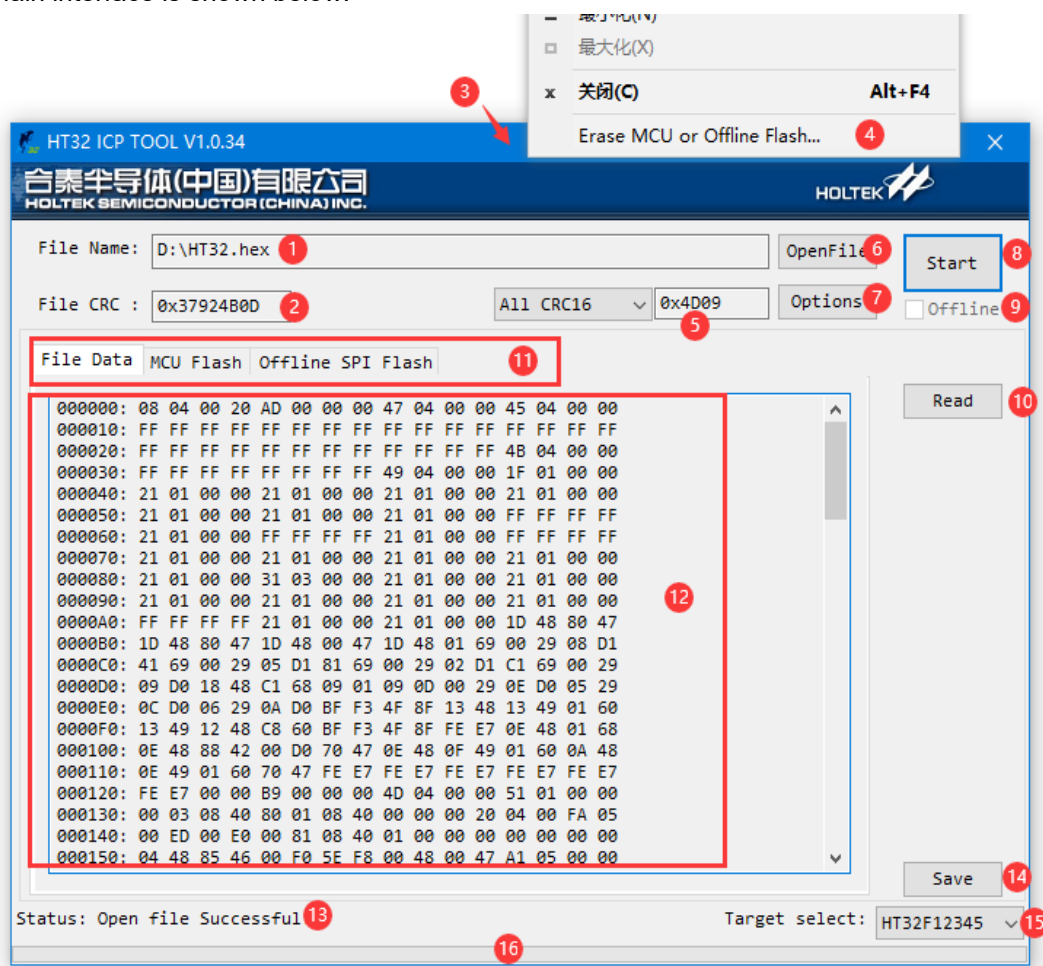
2.2. Offline Programming Mode

If the “Offline programming mode” option is checked, the ICP Tool will program in offline programming mode. Click the “Start” button to save the file data into e-Link32 at first,

Next, user can program the target devices with the eLink32 alone (instead of using PC and ICP Tool) by pressing the button on the e-Link32.

3. How to Use ICP Programming Tool

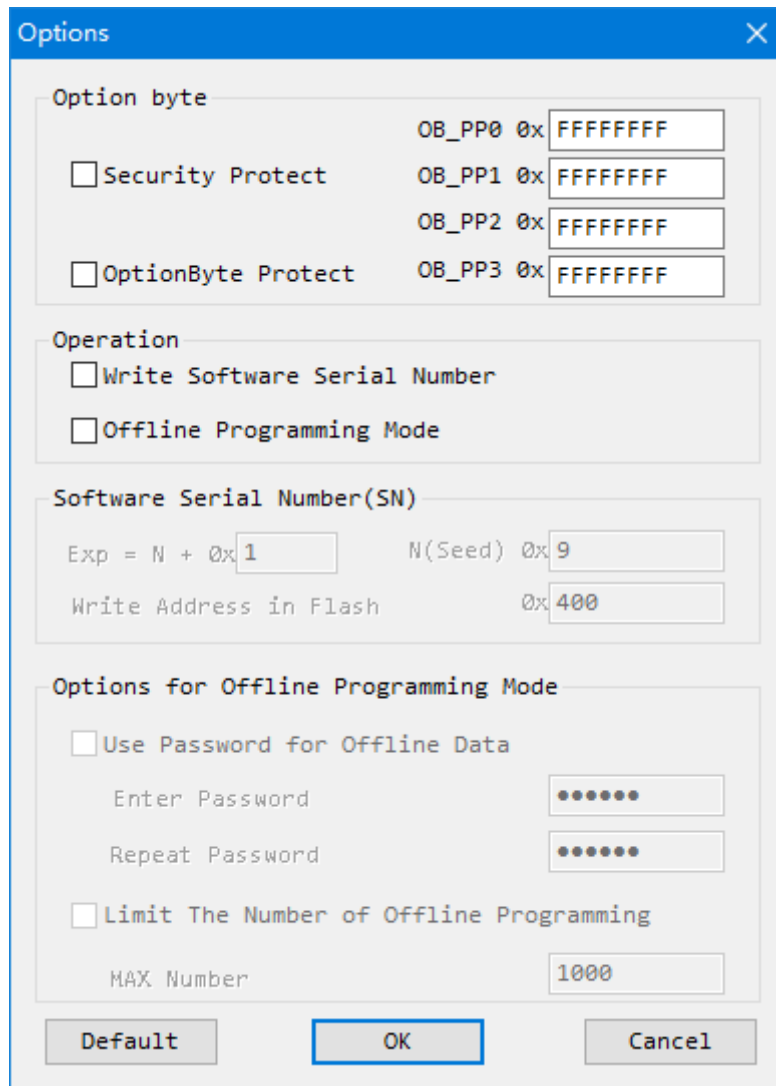
The main interface is shown below:



ICP Tool User Interface

- | | | | |
|---------------------|---------------|-----------------|----------------|
| ① File Path | ② File CRC32 | ③ Right Click | ④ Open Subform |
| ⑤ Data CRC16 | ⑥ Open Button | ⑦ Option Button | ⑧ Start Button |
| ⑨ OfflineMode State | ⑩ Read Button | ⑪ Data TabList | ⑫ Data |
| ⑬ Status | ⑭ Save Button | ⑮ Target Select | ⑯ Progress |

The options interface is shown below:



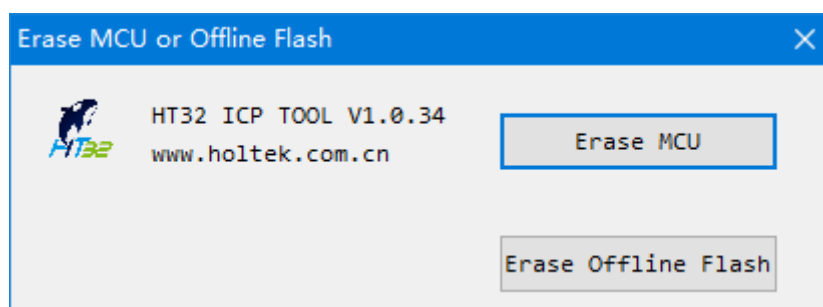
The Options dialog box contains the following sections:

- Option byte**
 - ☐ Security Protect: OB_PP0 0x FFFFFFFF, OB_PP1 0x FFFFFFFF, OB_PP2 0x FFFFFFFF, OB_PP3 0x FFFFFFFF
 - ☐ OptionByte Protect: OB_PP3 0x FFFFFFFF
- Operation**
 - ☐ Write Software Serial Number
 - ☐ Offline Programming Mode
- Software Serial Number(SN)**
 - Exp = N + 0x 1, N(Seed) 0x 9
 - Write Address in Flash: 0x 400
- Options for Offline Programming Mode**
 - ☐ Use Password for Offline Data
 - Enter Password: [password field]
 - Repeat Password: [password field]
 - ☐ Limit The Number of Offline Programming
 - MAX Number: 1000

Buttons: Default, OK, Cancel

ICP Tool programming options Interface

The Erase interface is shown below:



The Erase MCU or Offline Flash dialog box contains the following elements:

- HT32 ICP TOOL V1.0.34
- www.holtek.com.cn
- Erase MCU button
- Erase Offline Flash button

ICP Tool Erase Interface

The steps of read operation:

- A. Run the ICP Tool and connect to a e-Link32 to the PC.
- B. Select the correct target chip type, if you want to read the target chip
- C. Click the “Read” button and waiting for it to end

The steps of write to chip operation:

- A. Run the ICP Tool and connect to a e-Link32 to the PC.
- B. Select the correct target chip type
- C. Select the object file(.bin or .hex)
- D. Open “Options” interface, make sure “Offline Programming Mode” is NOT checked
- E. Click the “Start” button and waiting for it to end

The steps of write to offline flash operation:

- A. Run the ICP Tool and connect to a e-Link32 to the PC.
- B. Select the correct target chip type
- C. Select the object file(.bin or .hex)
- D. Open “Options” interface, make sure “Offline Programming Mode” is checked
- E. Click the “Start” button and waiting for it to end

NOW, you can programming chip with e-Link32 alone.

Press the button on the e-link32 board;

Should see the blue-LED on immediately;

Waiting for the blue-LED blink:

If the blue-LED blink 3 times and then off, it means programming successful;

If the red-LED blink alone and continue many times, it means fail.

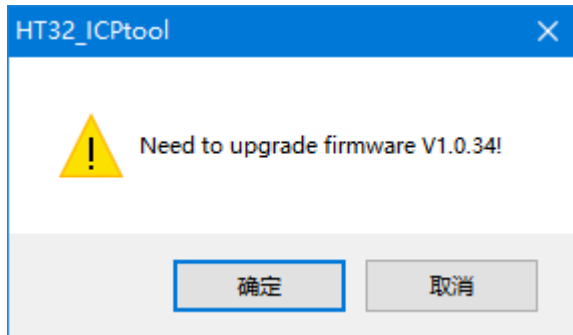
Notice: if there is not SPI flash on the e-Link32, the function of offline programming is reserved

4. e-Link32 Firmware Update

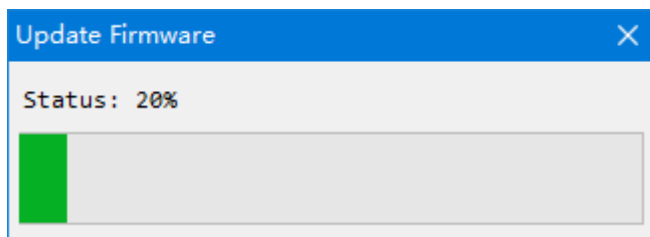
Run the ICP Tool and connect to a e-Link32 to the PC.

Process any read or write operation;

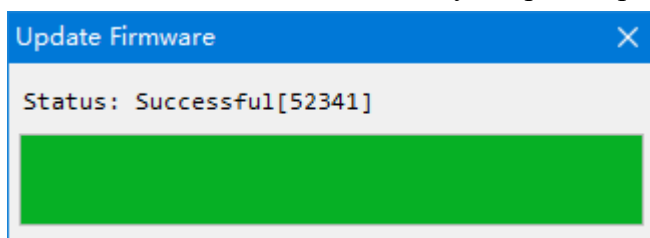
If the firmware version is older than ICP Tool, a firmware update form will be displayed, as shown below:



If you select yes, it will start update firmware, as shown below:



After a while, the status will show you update operation is complete.



Notice: Do not stop it when updating firmware, Otherwise it will always be in the IAP mode.

5. Revision History

Revision	Date	Description
0.04	2016-03-23	The first Public release version
0.05	2016-03-25	ICP Tool adds support for multiple e-Link32 when connected
0.06	2016-04-05	Fix VCOM bug
0.07	2016-04-12	Fix read option page bug
0.09	2016-05-26	F/W compatible with e-Link32 pro; fix SN not 0xffffffff bug
0.10	2016-06-02	Fix UART interrupt bug; add WDT
0.11	2016-06-14	When update Firmware, write version and SP at the end
0.12	2016/7/28	Fix VCOM descriptor
0.13	2016/9/28	Fix 1253 MDID error
0.14	2016/10/24	Fix offline WDT timeout bug
0.15	2016/12/15	1,Add interface string; 2,Support 52341 F/W update
0.16	2017/4/7	1,兼容某些串口软件打开端口的差异; 2,烧录时加入 CRC0; 3,修正 boot pin 拉低时脱机烧录出错; 4,界面加入最小化;
0.17	2017/5/2	1,增加 BKISO; 2,优化程序, SWD 提速, 脱机烧录提速; 52341 版本 elink32 烧录 127K 52352 从原 7.1s 减至 2.6s; 1654 版本 elink32 烧录 127K 52352 从原 2.1s 减至 1.7s。
0.18	2017/12/14	1,增加 HT32F0008, HT32F5826 等型号; 2,修正对 52341 主芯片的 elink32 更新偶尔会失败的 bug; 3,UI 更新;
0.19	2017/12/18	1,修正更新 elink32 F/W 之后立刻写 target, 数据是被覆盖的错误数据 bug;
0.20	2017/12/21	1,修正脱机烧录时, 因 Reset 脚未连接, WDT 有可能会复位的 bug;
0.21	2018/01/24	1,修正目标芯片 SWD 切换到 GPIO,并且时钟源为 HSI 时会无法操作的 bug;
0.22	2018/03/09	1, 增加 CRC16, 保持与 HOPE3000 的结果一致; 去掉 AutoSelect 功能; 2, 修正新引入的 offline 烧录 LED 状态 bug 和 RESET pin bug; 3, 增加每周自动检查一次线上新版本功能; 4, 修改读取操作之后自动跳转到 MCU Flash 页面; 5, 增加芯片型号 HT32F0006;
0.23	2018/11/20	1, 增加 52344、52354; 2, 修改 uart 的波特率配置, 最高可到 3Mbps; 3, Software 与 firmware 版本不一致就提示更新 firmware。

Revision	Date	Description
0.24	2019/04/08	1, Delete auto check update;
0.25	2019/08/28	1, 修正虚拟串口的相关 bug: 打开串口的定义和 UART 的中断优先级;
0.26	2019/09/19	1, 增加 57331, 57341 等 11 个新型号 MCU;移除几个太旧的型号; 2, Reset 改为 AutoDetect 模式; 除睡眠或 SWD 被切成 GPIO, 可不接 reset; 3, 可以拖拽文件到界面上来打开文件;
0.27	2019/10/31	1, 增加新型号 HT32F65230; 2, 修正打开超大文件会崩溃的 bug;
0.28	2019/11/14	1, 修改设置波特率的优先级, 防止打开串口后立即发送数据可能出现波特率错误。
0.29	2020/04/15	1, 增加序列号的步长设置功能; 2, 增加烧录完成后, 软复位目标芯片功能; 3, 修改更新网站地址; 4, 修正离线烧录若有序列号, CRC16 烧录不正确 bug;
0.30	2020/09/28	1, 串口增加 7bit 模式, 增加 Mark/Space 控制; 2, F/W 数据移到外面做成 bin 格式;
0.31	2021/03/19	1, 增加 vendor CMD 0x16, sector erase; 2, 修正 1654 版本 UART 少发数据 bug; 3, 打开 update bin 方式改为 shareDenyNone;
0.31b	2021/06/10	1, 打开 update bin 文件使用绝对路径方式; 修正 Update 窗口内存的回收; 2, 增加 log;
0.32	2021/08/17	1, 修正手册中对 LED 的含义描述; 2, 兼容 BMduino-UNO 板载 elink32(LED 不同); 3, 修正 UART RXD 概率性崩溃的 bug;
0.33	2021/12/13	1, 修改 VCOM 最小波特率,增加 RTS,DTR; 2, 更新文件 ht32_usbd_core.c(FWlib 更新); 3, 兼容最小 2K RAM 的 MCU 的 ICP 烧录功能; 4, 增加 54231/41, 54243/53, 65232, 61141 这 6 个 MCU 型号;
1.0.34	2022/03/02	1, 修改 elink32 的 SWD 接口空闲时为输入模式;
1.0.35	2022/05/10	1, 增加新型号 HT32F5828; 2, 修改为通过上位机指令控制 elink32 的 SWD 为输入模式;
1.0.36	2022/07/12	1, 优化对 hex 文件扩展段地址格式的支持;
1.0.37	2022/08/02	1, 优化对 hex 文件扩展段地址格式的支持(上一版没有优化完整);
1.0.38	2022/09/16	1, 增加型号 HT32F65532G, HT32F65540G, HT32F50020, HT32F50030
1.0.39	2022/10/09	1, 修改 HT32F65532G, HT32F65540G 的 MDID

Holtek Semiconductor Inc. (Headquarters)

No.3, Creation Rd. II, Science Park, Hsinchu, Taiwan

Tel: 886-3-563-1999

Fax: 886-3-563-1189

<http://www.holtek.com.tw>

Holtek Semiconductor Inc. (Taipei Sales Office)

4F-2, No. 3-2, YuanQu St., Nankang Software Park, Taipei 115, Taiwan

Tel: 886-2-2655-7070

Fax: 886-2-2655-7373

Fax: 886-2-2655-7383 (International sales hotline)

Holtek Semiconductor (China) Inc.

Building No.10, Xinzhu Court, (No.1 Headquarters), 4 Cuizhu Road, Songshan Lake, Dongguan, China 523808

Tel: 86-769-2626-1300

Fax: 86-769-2626-1311

Holtek Semiconductor (USA), Inc. (North America Sales Office)

46729 Fremont Blvd., Fremont, CA 94538, USA

Tel: 1-510-252-9880

Fax: 1-510-252-9885

<http://www.holtek.com>

Copyright © 2013 by HOLTEK SEMICONDUCTOR INC.

The information appearing in this Data Sheet is believed to be accurate at the time of publication. However, Holtek assumes no responsibility arising from the use of the specifications described. The applications mentioned herein are used solely for the purpose of illustration and Holtek makes no warranty or representation that such applications will be suitable without further modification, nor recommends the use of its products for application that may present a risk to human life due to malfunction or otherwise. Holtek's products are not authorized for use as critical components in life support devices or systems. Holtek reserves the right to alter its products without prior notification. For the most up-to-date information, please visit our web site at <http://www.holtek.com>